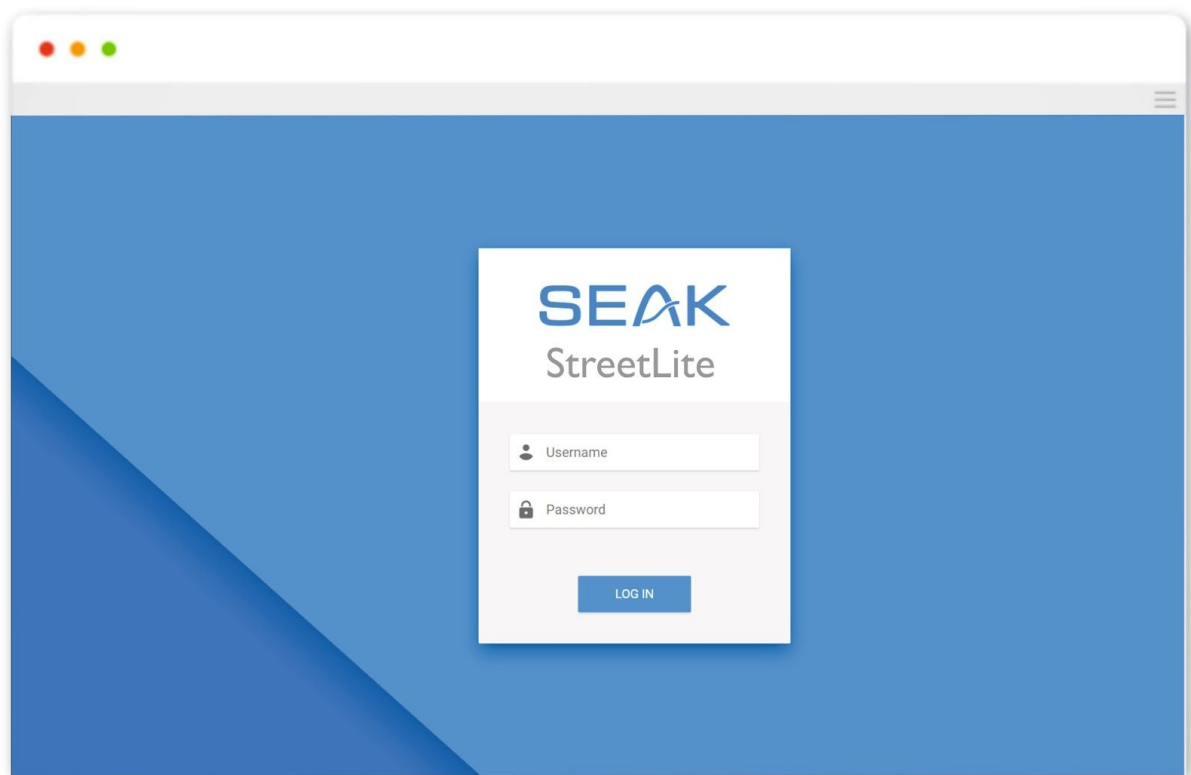


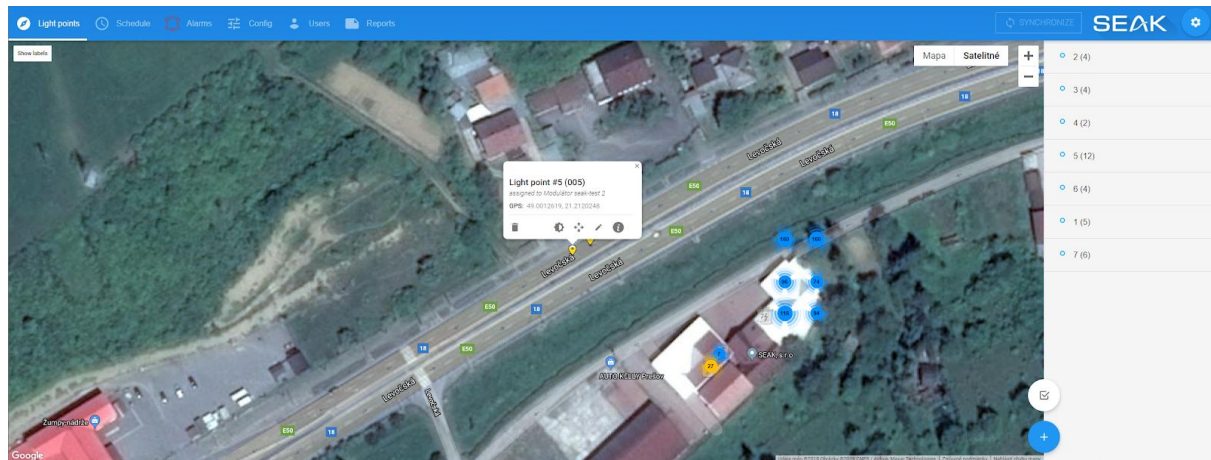
# StreetLite app

## Overview



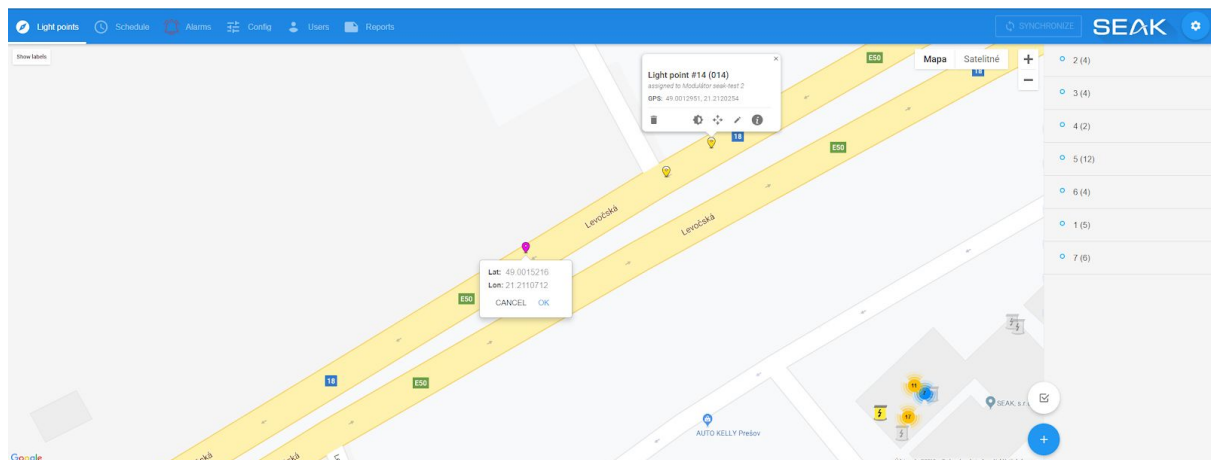
## Simple & User-friendly

Gives the mayor the power to control the lighting. The StreetLite app is provided on Software-as-a-Service model. We host it and maintain it for you, so you only need a web browser to use it. No installation necessary.



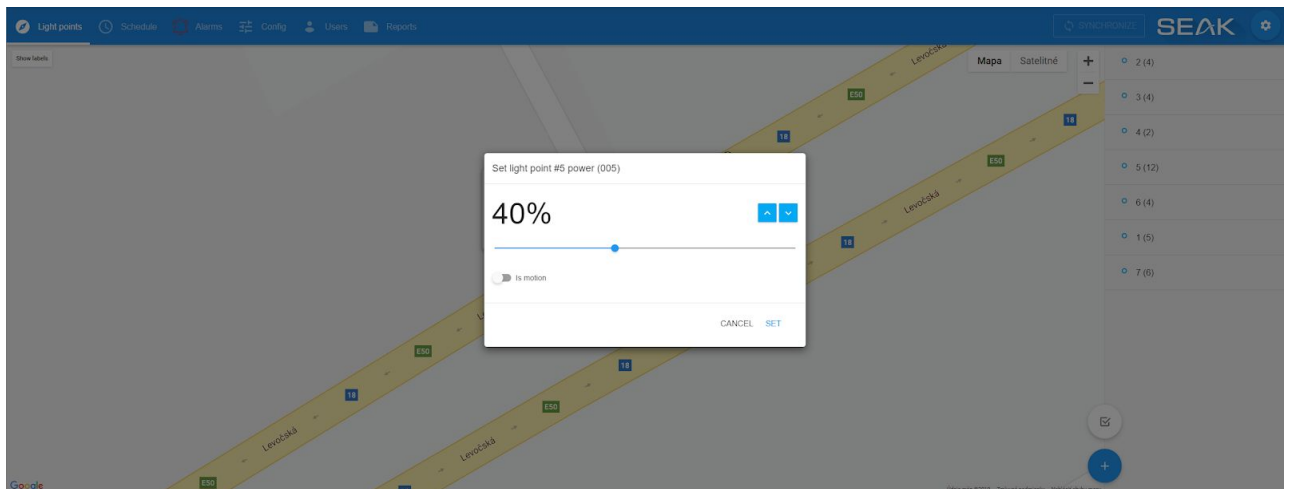
## Integration with Google maps

Allows user to trace switching points through Google maps.



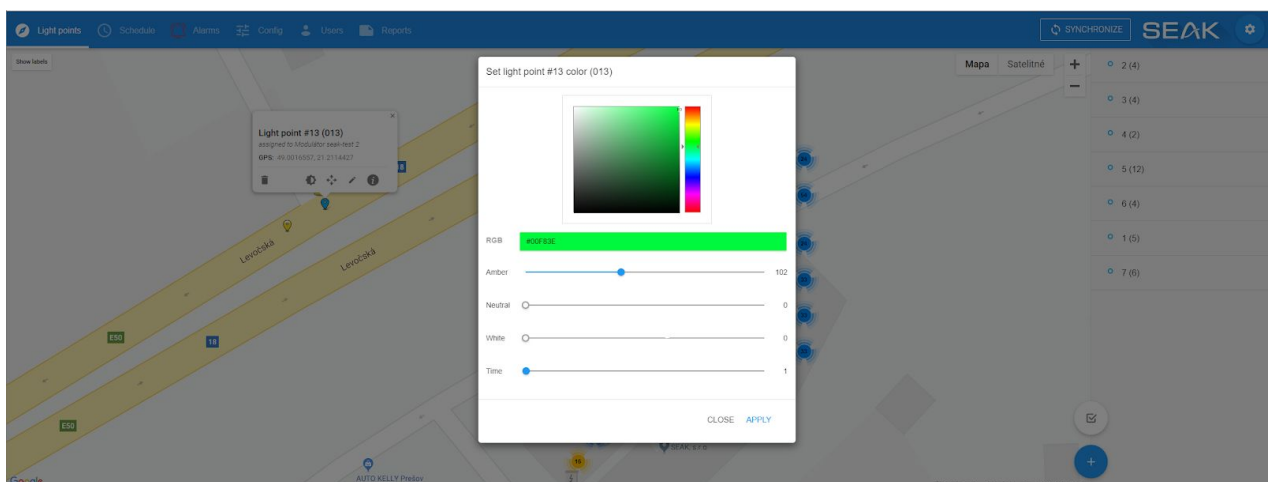
## Management of intensity

Manage the light intensity for the whole city, for luminaire groups or for each luminaire individually.



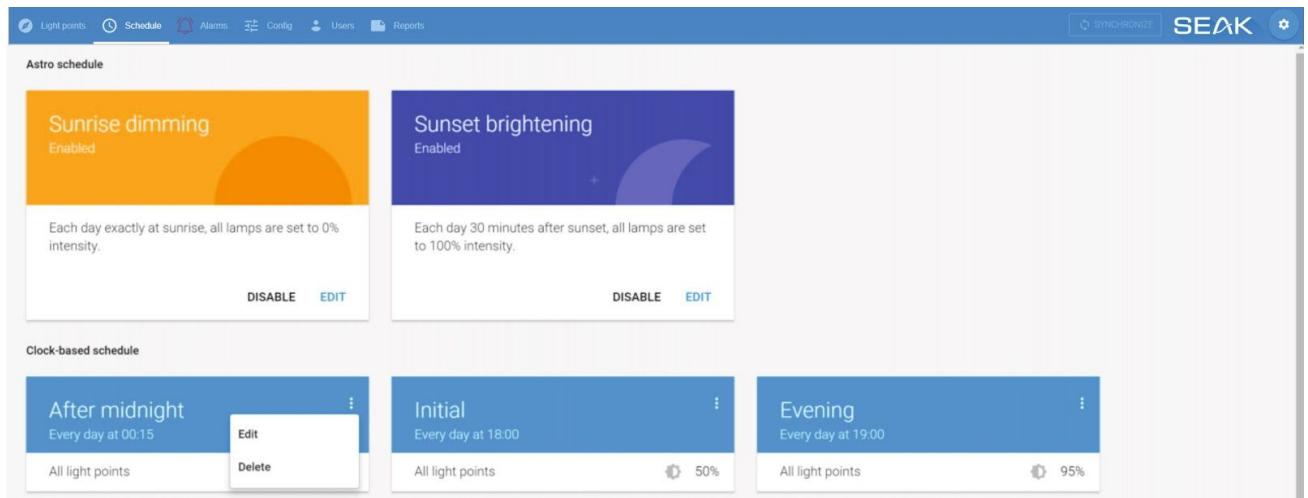
## Management of lighting color

Manage the color (RGB, tunable white) for luminaire groups or for each luminaire individually.



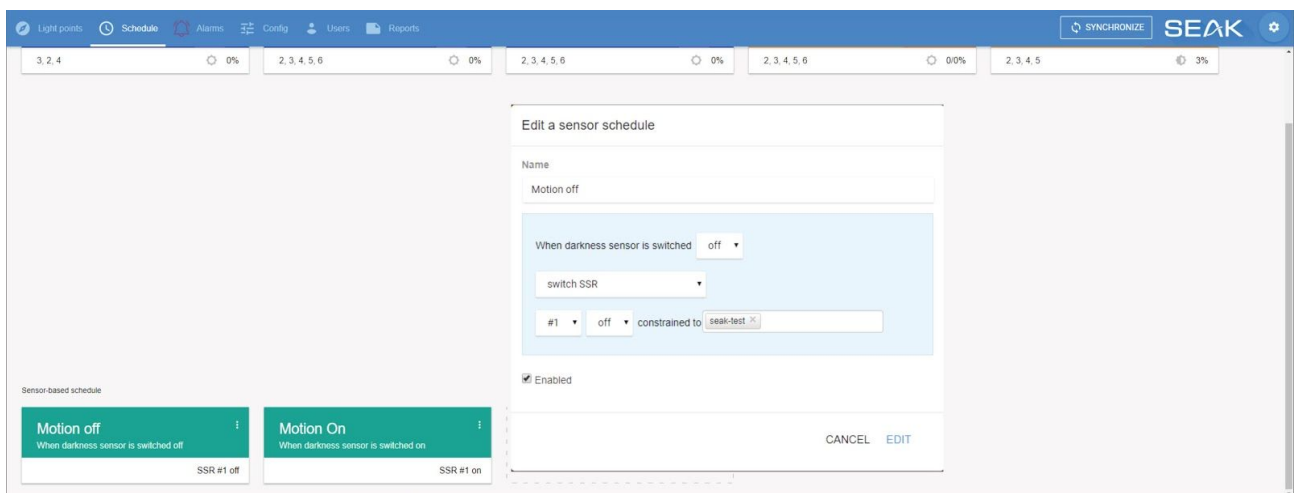
## Management of schedule

Manage the schedules based on the clock or based on astronomical sunset/sunrise.



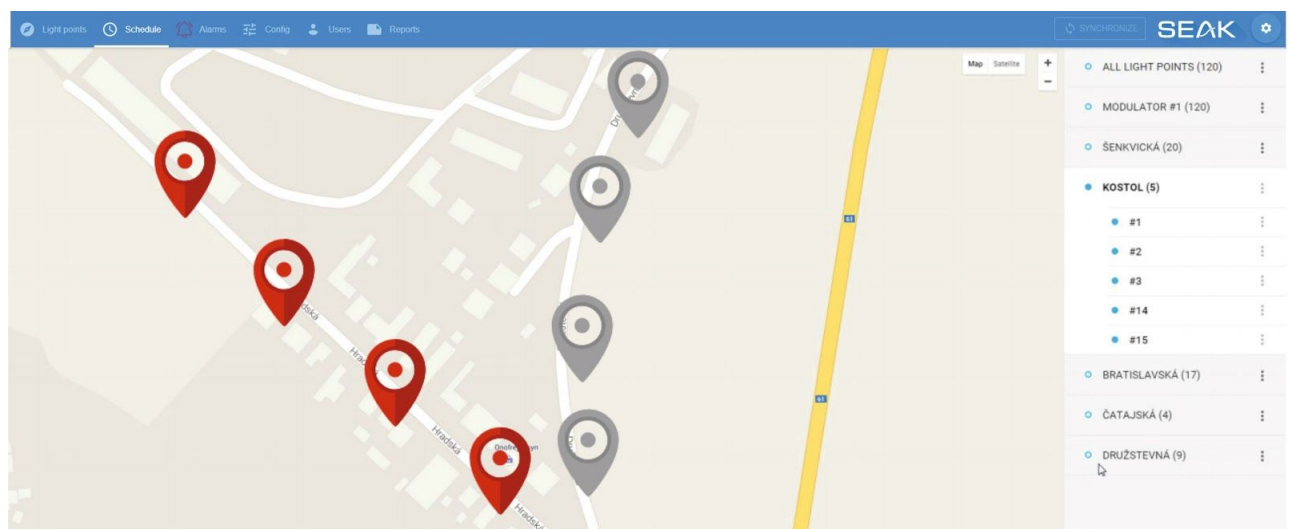
## Sensors

Combine the schedules with optional luminosity and motion sensors.



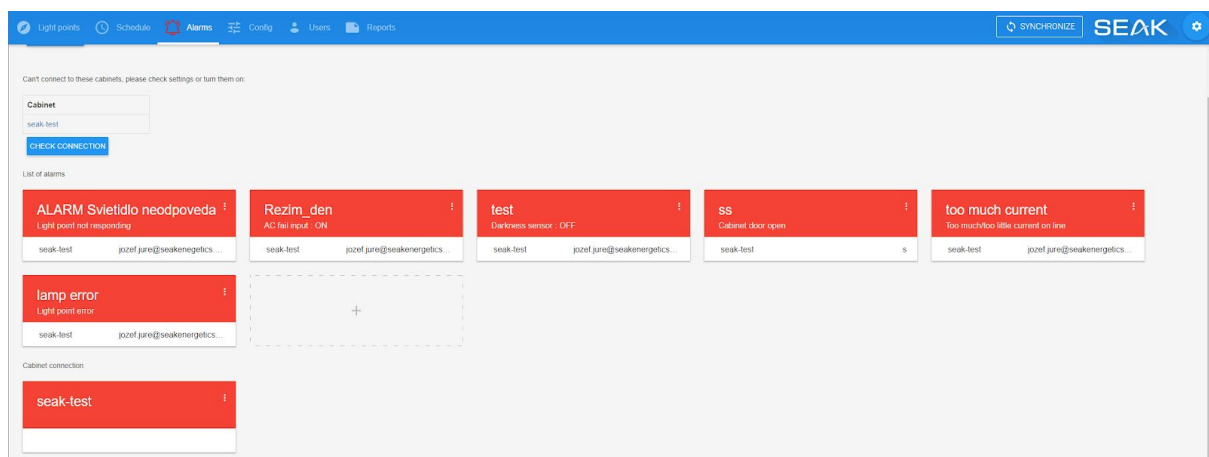
## Checking of lamp status

Check the status of individual luminaires. The application automatically detects and highlights the failure of all LUMiNODE equipped luminaires.



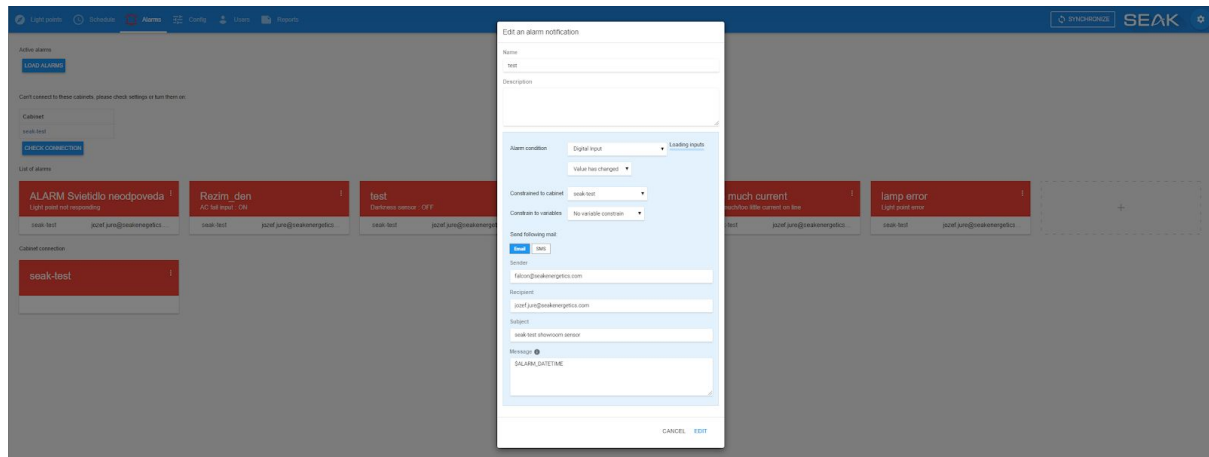
## A city-wide table of active alarms

New Lumimaster firmware provides monitoring of all alarms in one place. In case of alarm activation, StreetLite user can mark it as acknowledged (so that it is easy to tell old alarms being resolved from new ones). An icon on the main menu notifies operator about active unacknowledged alarm, which is visible to operator anytime.



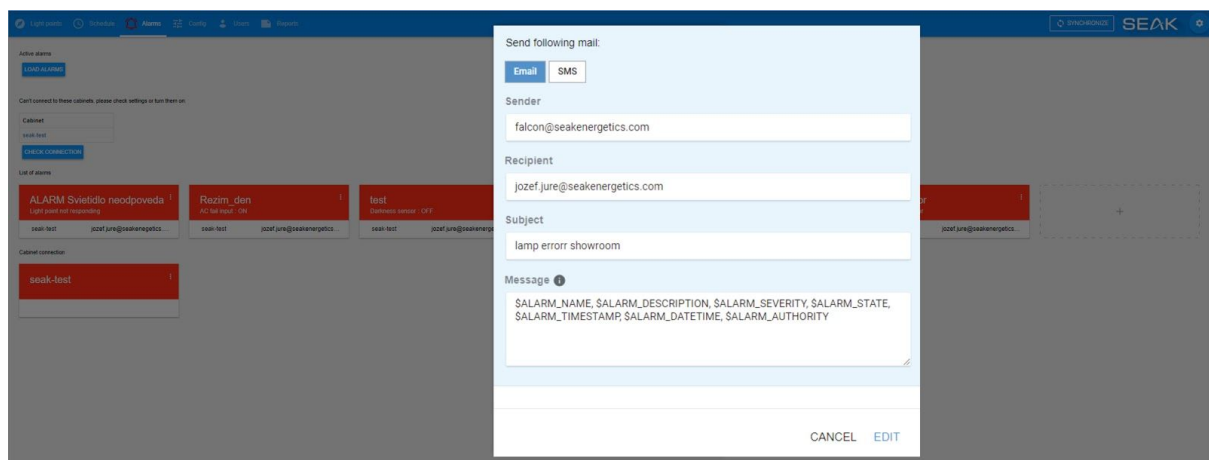
## Alarms on extended digital inputs

If you have I/O extender module connected to LUMiMASTER, it is now also possible to assign alarm conditions to its inputs. In the alarm settings, you simply assign a Digital Input Value in the same way as if it was internal I/O. Now you can use Seak system also to monitor other sensors.



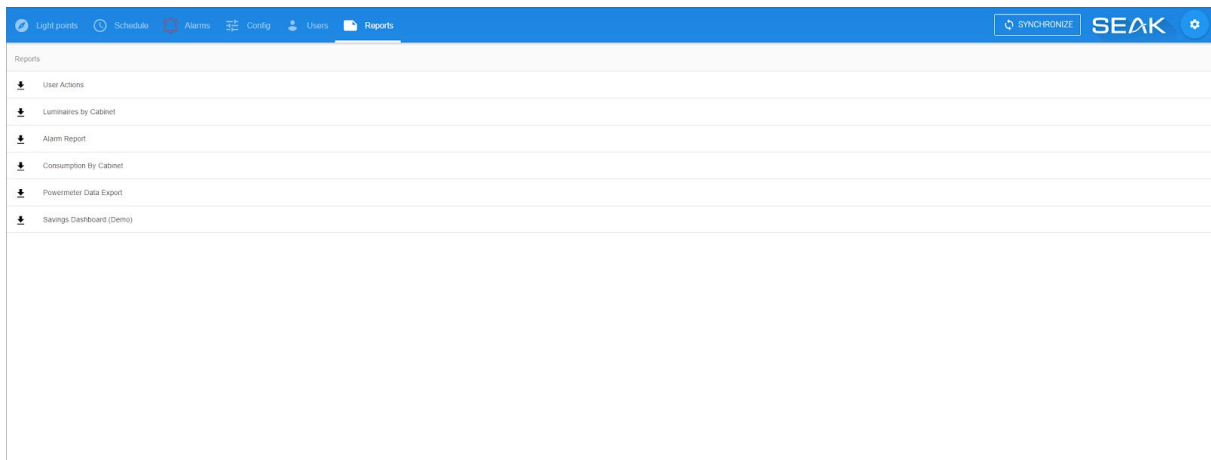
## Automated SMS or Email notification

Web based software offers SMS and Email alerts for various faults. Also, provides monthly reports through email. Detect vandalism or power theft.



## Reports

StreetLite offers several standard, customizable reports. Whether to inform users about the energy savings or generate full report with information about Voltage, Current, Power and Power factor for individual cabinet and phases in a simple table and charts.



## User management

Streetlite application enables user safety with multiple user privileges and differentiates admin/general users to avoid unintended misconfiguration..

